

## First Announcement

# International Conference on High Energy Density Physics, Beijing



**Peking University, Beijing, China**

**October 18-21, 2012**

**CALL FOR PAPER NOW!**

You are cordially invited to submit an abstract to  
[ichedp2012@coe.pku.edu.cn](mailto:ichedp2012@coe.pku.edu.cn) or [ichedp2012@gmail.com](mailto:ichedp2012@gmail.com)

More information: <http://capt.pku.edu.cn/ichedp.html>

### **Conference Organization**

- Conference Chair:** Prof. Xian-Tu He (Peking University, China)  
**Conference Co-Chairs:** Prof. Shiyi Chen (Peking University, China)  
Prof. Jie Zhang (Shanghai Jiao Tong University, China)  
Prof. Weiyan Zhang (China Academy of Engineering Physics, China)

## **Important Dates**

First Announcement: February 7, 2012  
Second Announcement: March 15, 2012  
Due Date for Abstract Submission: May 15, 2012  
Acceptance Decision: June 15, 2012  
Conference: October 18-21, 2012.

## **Themes**

The International Conference on High Energy Density Physics, organized by the Center for Applied Physics and Technology (CAPT) of Peking University, is to be held in Beijing, China during October 18-21, 2012. The conference aims at providing a forum for researchers who work on theories, simulations and experiments of high energy density physics (HEDP) to share their progresses, insights, and visions, and also for young scientists who are interested in this field. The main topics of the conference include, but are not limited to:

- High Mach number compressible turbulence and hydrodynamic instabilities;
- Radiation hydrodynamics;
- Matter properties, especially of warm dense matters, under high energy density conditions;
- Energetic particle acceleration and atomic dynamics in high/intense field;
- Numerical methods for HEDP simulations.

## **International Advisory Committee (Confirmed)**

Dario Alfè (University College London, UK)  
David M. Ceperley (University of Illinois at Urbana-Champaign, US)  
Shiyi Chen (Peking University, China)

## 1st Announcement of International Conference on High Energy Density Physics, Beijing, October 18-21, 2012

---

William Goldstein (Lawrence Livermore National Laboratory, US)  
Xian-Tu He (Peking University & Institute of Applied Physics and  
Computational Mathematics, China)  
Christoph H. Keitel (Max-Planck-Institut für Kernphysik, Germany)  
Chikang Li (Massachusetts Institute of Technology, US)  
Jürgen Meyer-ter-Vehn (Max-Planck-Institut für Quantenoptik, Germany)  
Kunioki Mima (Osaka University, Japan)  
Toshiki Tajima (University of Munich, Germany)  
Ming-young Yu (Zhejiang University, China)  
Gang Zhao (National Astronomical Observatories, Chinese Academy of  
Sciences, China)  
Jie Zhang (Shanghai Jiao Tong University, China)  
Weiyan Zhang (China Academy of Engineering Physics, China)  
Shao-ping Zhu (Institute of Applied Physics and Computational  
Mathematics, China)

### Invited Speakers (Confirmed)

Shiyi Chen (Peking University, China)  
William Goldstein (Lawrence Livermore National Laboratory, US)  
Xian-Tu He (Peking University & Institute of Applied Physics and Computational  
Mathematics, China)  
Christoph H. Keitel (Max-Planck-Institut für Kernphysik, Germany)  
Chikang Li (Massachusetts Institute of Technology, US)  
Wei Lu (Tsinghua University, China)  
Jürgen Meyer-ter-Vehn (Max-Planck-Institut für Quantenoptik, Germany)  
Kunioki Mima (Osaka University, Japan)  
Bin Qiao (University of California, US)

Zhengming Sheng (Shanghai Jiao Tong University, China)  
Xueqing Yan (Peking University, China)  
Ming-young Yu (Zhejiang University, China)  
Jie Zhang (Shanghai Jiao Tong University, China)  
Jiayong Zhong (National Astronomical Observatories, Chinese Academy of  
Sciences, China)

### Local Organizing Committee

Shaoqiang Tang, Huiling Duan, Wei Kang, Jianming Xue, Xueqing Yan, and  
Zuoli Xiao (Peking University, China)  
Jun Yan, Jie Liu, and Ping Zhang (Institute of Applied Physics and Computational  
Mathematics, China)

### Contact

Ms. Lixin Zhou and Ms. Shasha Meng  
Tel: 86-10-62753944  
Email: [ichedp2012@coe.pku.edu.cn](mailto:ichedp2012@coe.pku.edu.cn) or [ichedp2012@gmail.com](mailto:ichedp2012@gmail.com)  
For more information please refer to the website <http://capt.pku.edu.cn/ichedp.html>

### Registration and Conference Location

The early registration fee is USD 500 and the late registration fee is USD 600.  
Student registration fee is USD 200, which does not cover the proceedings and  
sightseeing. Lunches will be provided in university restaurants without extra  
charge.

The conference will be held in Yingjie Exchange Center (YEC) of Peking  
University, on the campus of Peking University.

## Lodging Accommodations:

There are several nice hotels around to choose:

	Rooms	Grade	Distance to venue	Price	Web
Lakeview Hotel	336	★★★★★	300 meters	\$110	<a href="http://www.thelakeviewhotel.com.cn">www.thelakeviewhotel.com.cn</a>
Zhongguanyuan Hotel	1500	★★★★★	5 minutes walk	\$60-70	<a href="http://www.pku-gv.com">http://www.pku-gv.com</a>
Ziyuan Hotel	300	★★★	10 minutes walk	\$30	N/A

- **Lake View Hotel (5-Star)**



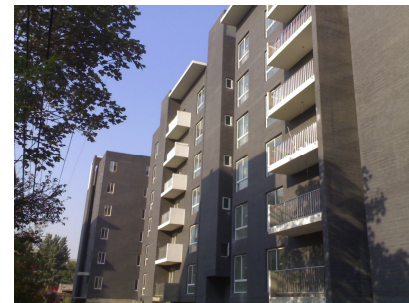
The Lake View Hotel is a five-star hotel, located near the Weiming Lake of Peking University, with spacious and comfortable guest rooms. The hotel is within walking distance to the meeting venue (5 minutes), and is close to many famous places, such as Peking University, Tsinghua University, the Summer Palace, the Garden of Perfection and Brightness, and the Zhongguanchun, known as the “Silicon Valley of China”.



Lakeview Hotel

- **Zhongguanyuan Global Village**

Zhongguanyuan Global Village is located on the east part of Peking University campus, and is within walking distance to the meeting venue (5 minutes). Clean rooms, standard service make it a good choice for conference participants.



Zhongguanyuan Global Village

## Sight Seeing:

### Accompanying persons' city tours

Day 1: Tiananmen Square, and Wangfujing Shopping Center

Day 2: Lama Temple and Liulichang Culture Street

Day 3: Temple of Heaven, and the Pearl Market

### Excursion: Visiting the Great Wall:

The Great Wall comprises walls, passes, watchtowers, castles and fortresses. The walls are made of large stone blocks. From east to west, the sections at Shanhaiguan, Jinshanling, Mutianyu, Badaling and Jiayuguan have become popular tourist attractions.

Most of The Great Wall that we see today dates back to the Ming Dynasty. The best-preserved and most imposing section is at Badaling near Beijing city.



### Banquet in the Summer Palace:

The banquet will be held in Tingliguan Restaurant (the Hall of Listening to Orioles) in Summer Palace, which had been a summer resort for the imperial families of Qing dynasty. The restaurant serves food in imperial style and provides traditional Chinese performances, such as KongFu, Chinese folk music, traditional dance or singing.

